



WE SHAPE YOUR DREAMS

CORPORATE OFFICE:

SAVGAN HEIGHTS, A-WING, 1ST FLOOR,  
RTO LANE, NEAR AMBEDKAR HALL, FOUR BUNGLOWS,  
ANDHERI (W) - MUMBAI 400 053

WEBSITE : [www.khandelwalgroupe.com](http://www.khandelwalgroupe.com)

TEL: 022 2630 4005 TO 10 | EMAIL: [info@khandelwalgroupe.com](mailto:info@khandelwalgroupe.com), [kgroupe@hotmail.com](mailto:kgroupe@hotmail.com)



— AN —  
EXCELLENCE THAT  
EMPOWERS, ENGAGES  
& ELEVATES

— AN —  
EXCELLENCE THAT  
YOU DESIRE, DREAM  
& DESERVE



WELCOME TO THE WORLD OF EXCELLENCE



40 YEARS  
OF CRAFTING  
LEGACIES

20,00,000  
SQ.FT  
UPCOMING

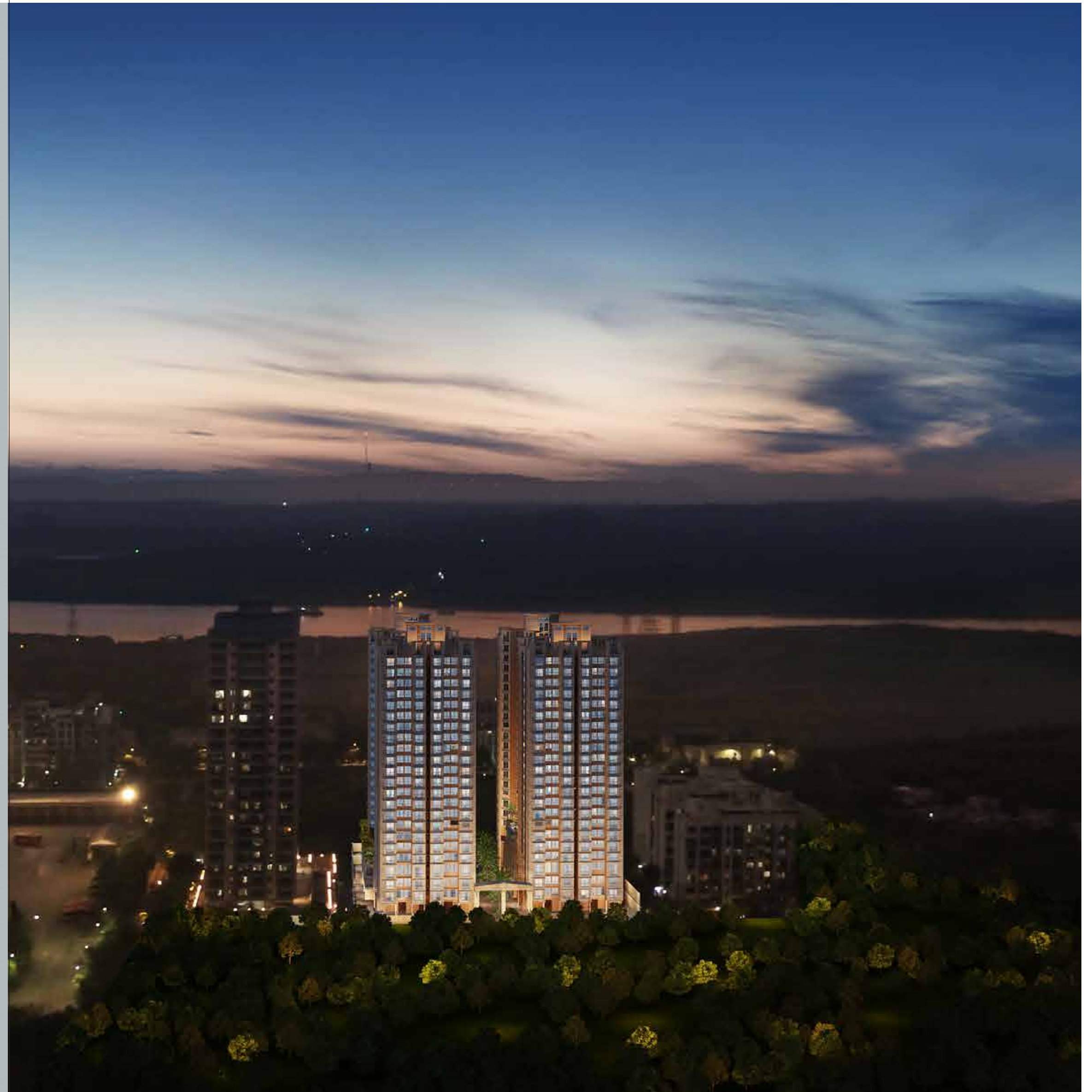
30,00,000  
SQ.FT  
DELEVERED

MEMBER OF

**CREDAI** - **MCHI**



**BDA** BRIHANMUMBAI  
DEVELOPERS ASSOCIATION



A  
LEGACY THAT STRIDES  
IN THE PRIDE  
OF EXCELLENCE

Since its inception in 1980, The Khandelwal Groupe has mastered the eminence of success in being the cynosures of the real estate industry under the visionary guidance of Shri. Babulal Khandelwal.

With a trailblazing legacy of 40 years, the Khandelwal Groupe has earned a name synonymous in crafting the finest experiences of living, it has crowned the skylines of Mumbai with revolutionary developments that are exemplary and excellent. The Khandelwal Groupe stands tall as a hallmark of leadership in setting new benchmarks of trust, commitment, dedication and timely delivery in evolving itself to be a premier brand with a credible and well-diversified portfolio of enviable reputation.

Upholding the motto, "we shape your dreams" the synthesis of the Khandelwal Groupe lies in creating meticulous homes that offer urban luxury economically, firmly rooted in the foundations of trust, ethics, excellence & transparency in offering nothing but the best.



## VISION

To establish itself as a thought leader across all verticals of the real estate industry & own a name synonymous with crafting world-class assets

## MISSION

To be a prudent, tactical & path-breaking realtor that specializes in landmark creations as an ode to the world of real estate.

## BELIEF

Committed to innovation, creativity & sustainability, we construct landmark marvels embracing our principles & values that shape our success to deliver with zero compromises on quality, standardisation and attention to detail.



# THE KHANDELWAL EXPERTISE CONSTRUED

## LAND & PLANNING

We are on a constant lookout for fresh scopes, our planning team is meticulous in seeking new residential, commercial or mixed-use development opportunities irrespective of size or measure.

---

## CONSTRUCTION

We have a proficient in-house construction team that matches the dedicated standards of planning, workmanship, cost-efficient and timely delivery, we also boast of an array of methods both technology-driven and traditional, to construct with passion every development in our well-diversified portfolio of repute.

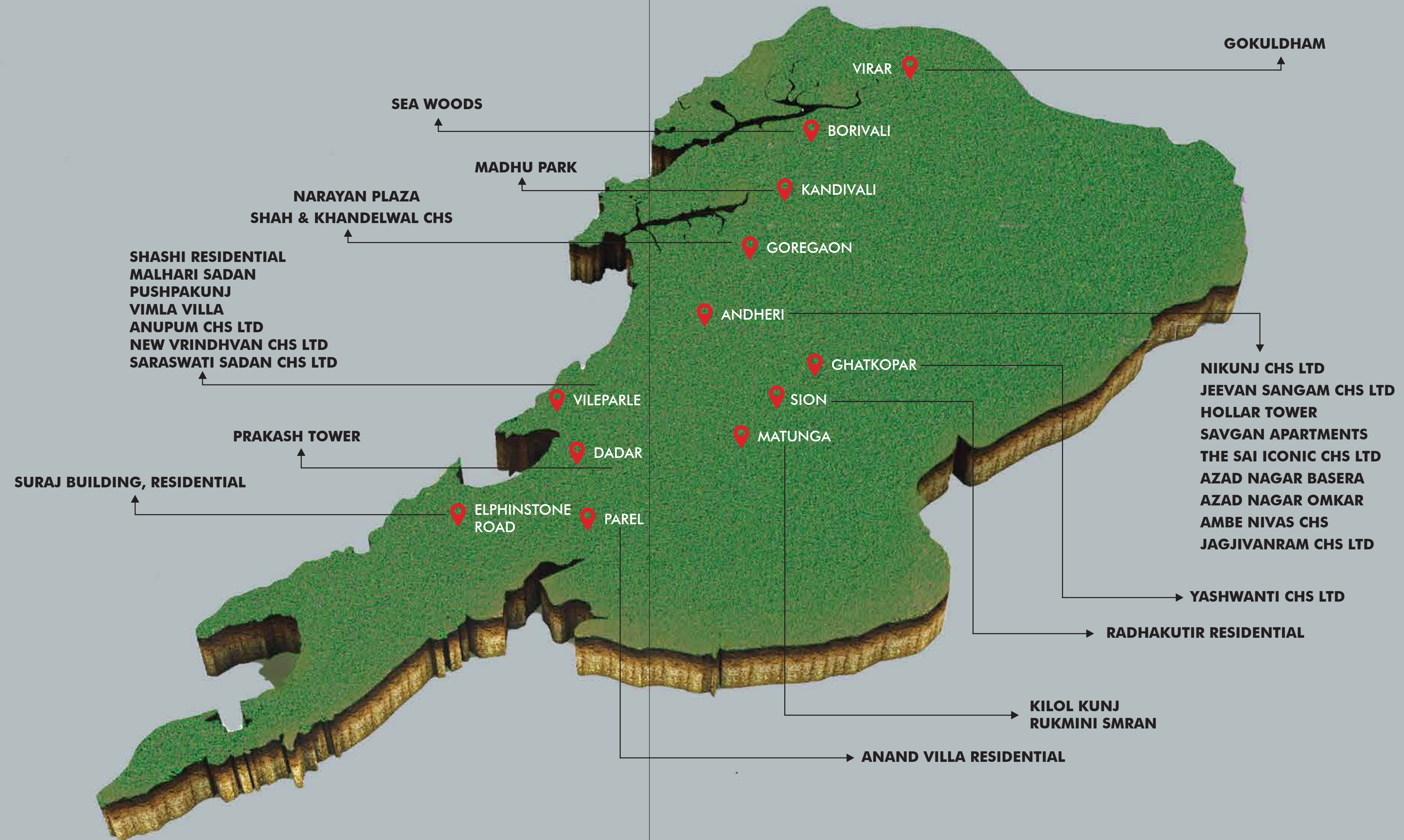
## DESIGN

We have a trove of reputed architects by our side who create tasteful & thoughtful architecture and designs that are both elegant & excellent, standing a testament to time in professing our very principles of innovation, detailing and craftsmanship.

---

## TECHNOLOGY & PROCESS

We adhere to modern trends and harness the powers of technology, all our platforms beginning from accounting, finance, construction, customer services & miscellaneous, are all integrated under ERP systems for us to address real-time issues, gain feedback, escalate efficiency, modernize a smooth-flow of process & conglomerate opportunities.





— THE —  
AMBITIONS OF  
MODERN LIVING  
FULFILLED

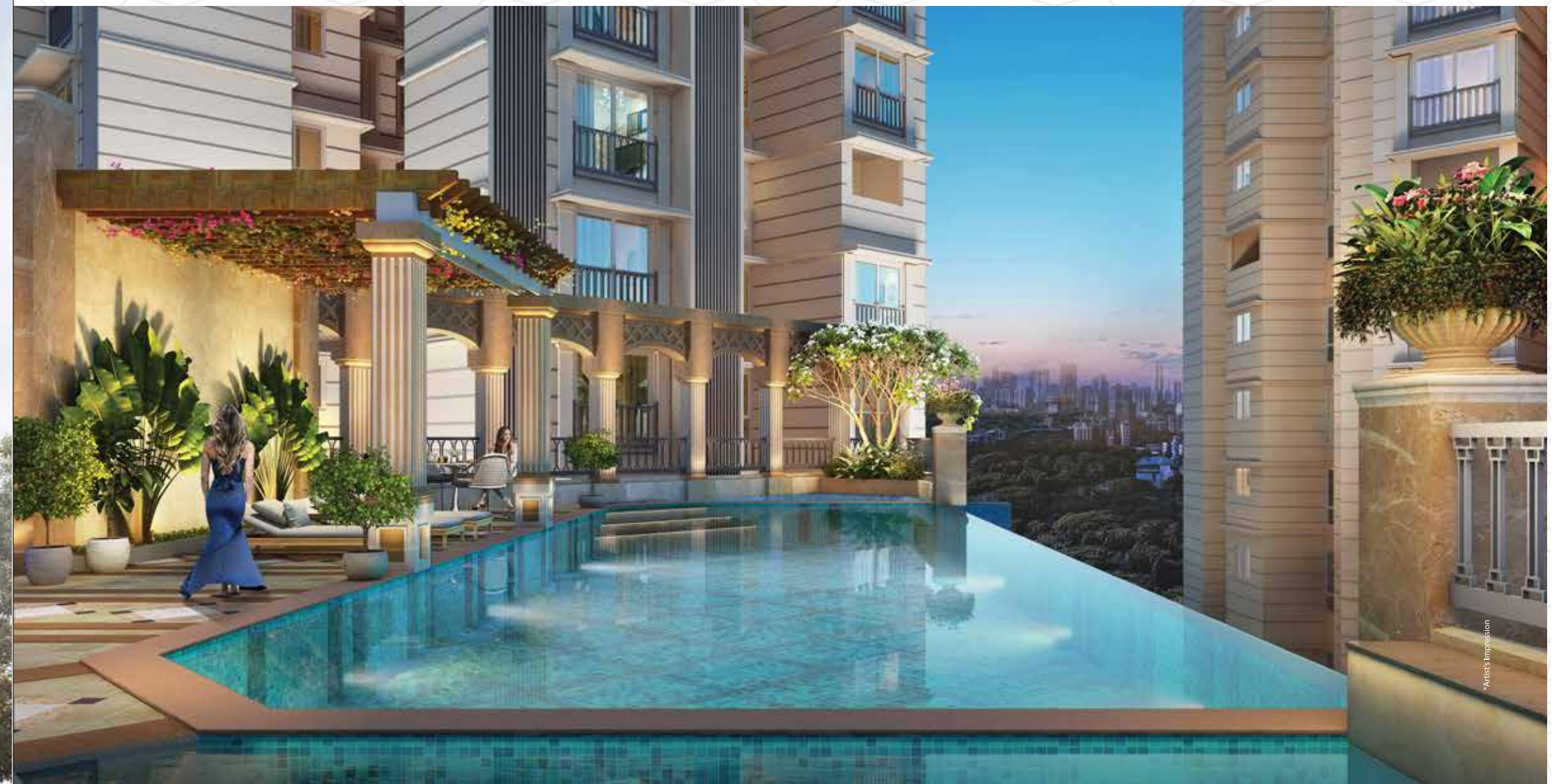
UPCOMING PROJECTS

All Projects are Full IOD/CC and RERA Registered

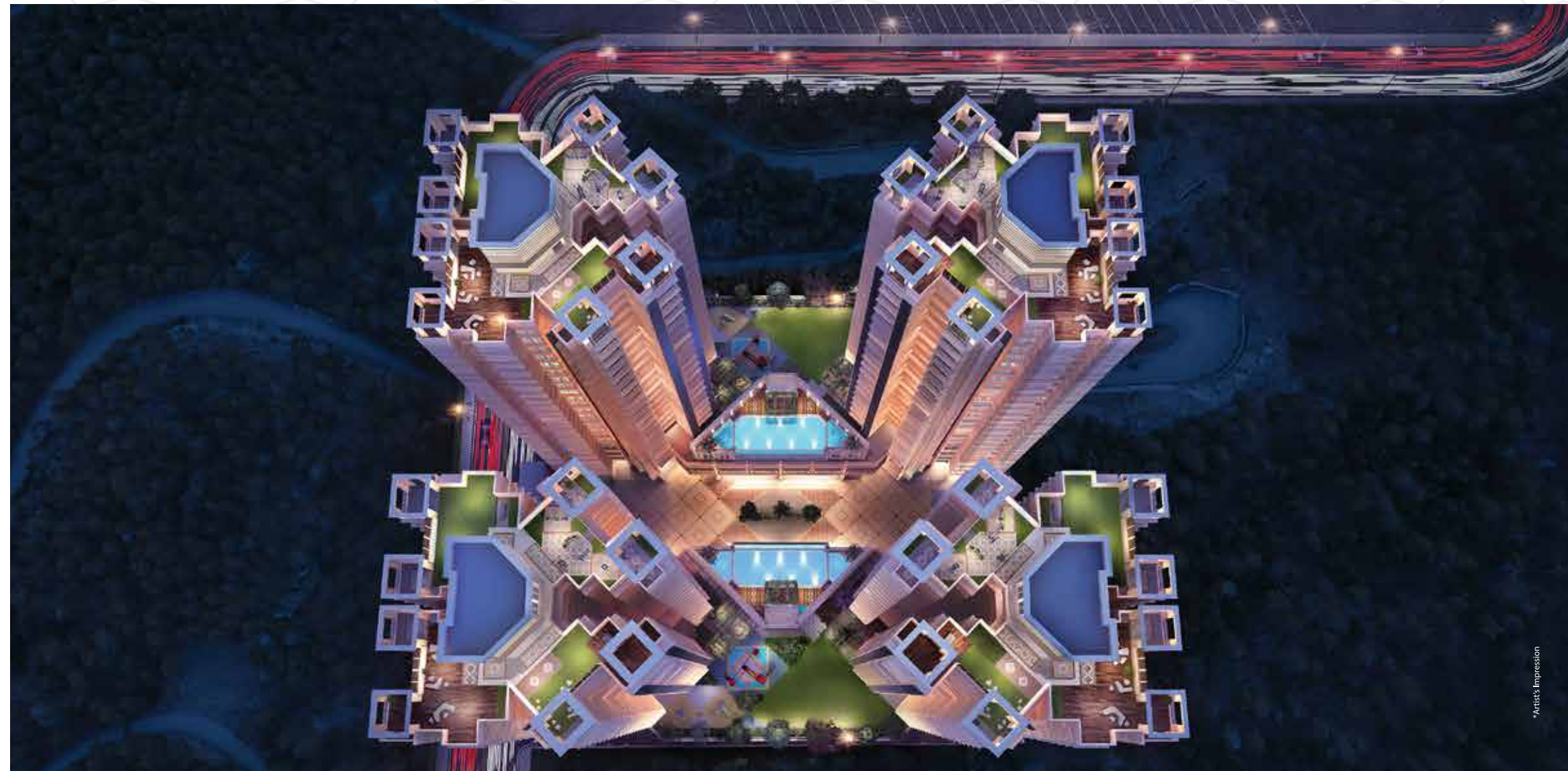


# LUXOR RESERVE

Borivali (W)







# THE COLOSSUS

Oshiwara



Artist's Impression



— THE —  
FULFILLING  
AMBITIONS  
OF A PERFECT  
LIVING

RECENTLY COMPLETED PROJECTS



**ANUPUM CHS LTD**  
Vileparle (E)



**AZAD NAGAR BASERA**  
Andheri (W)



**OMKAR TOWER**  
Andheri (W)



**SARASWATISADAN**  
Vile Parle (E)

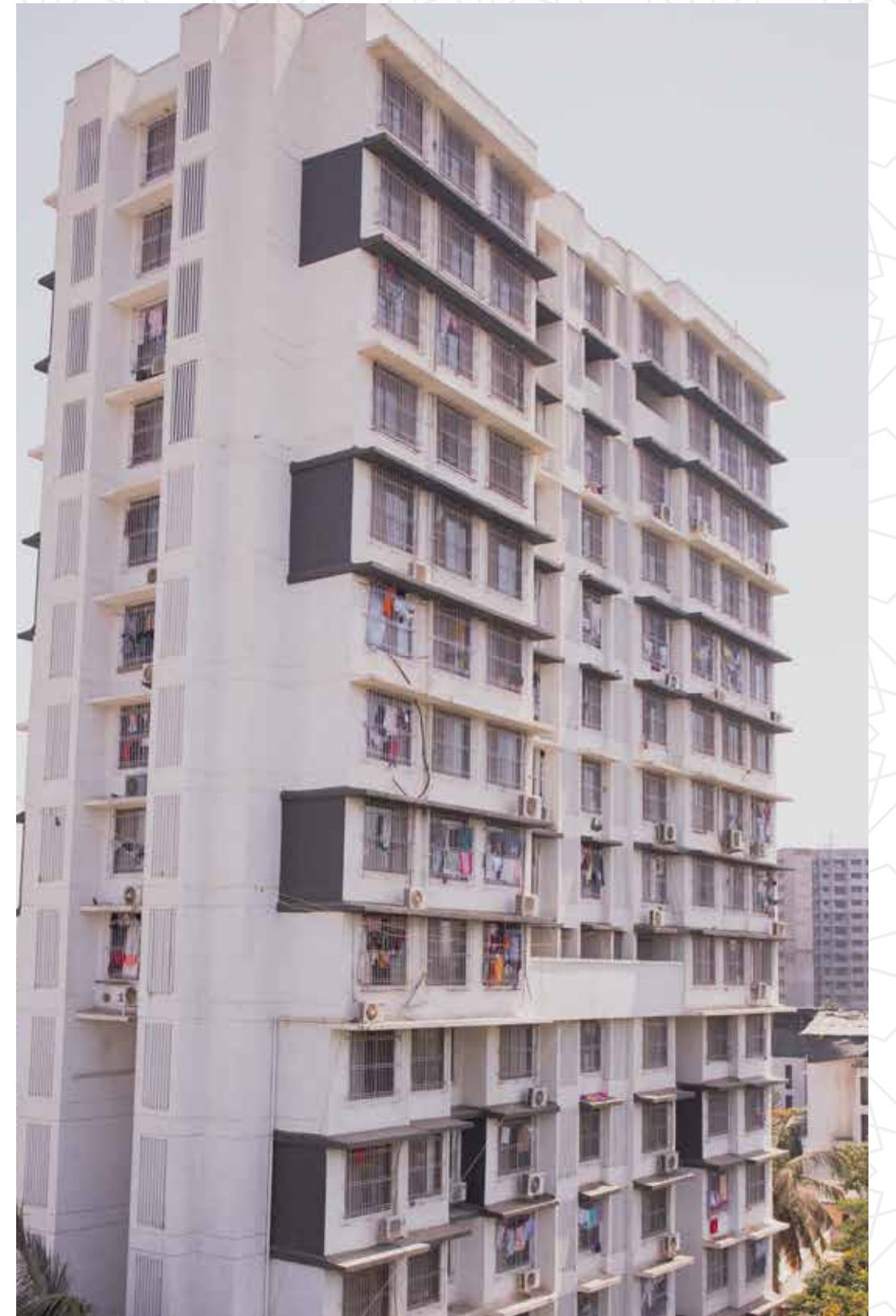




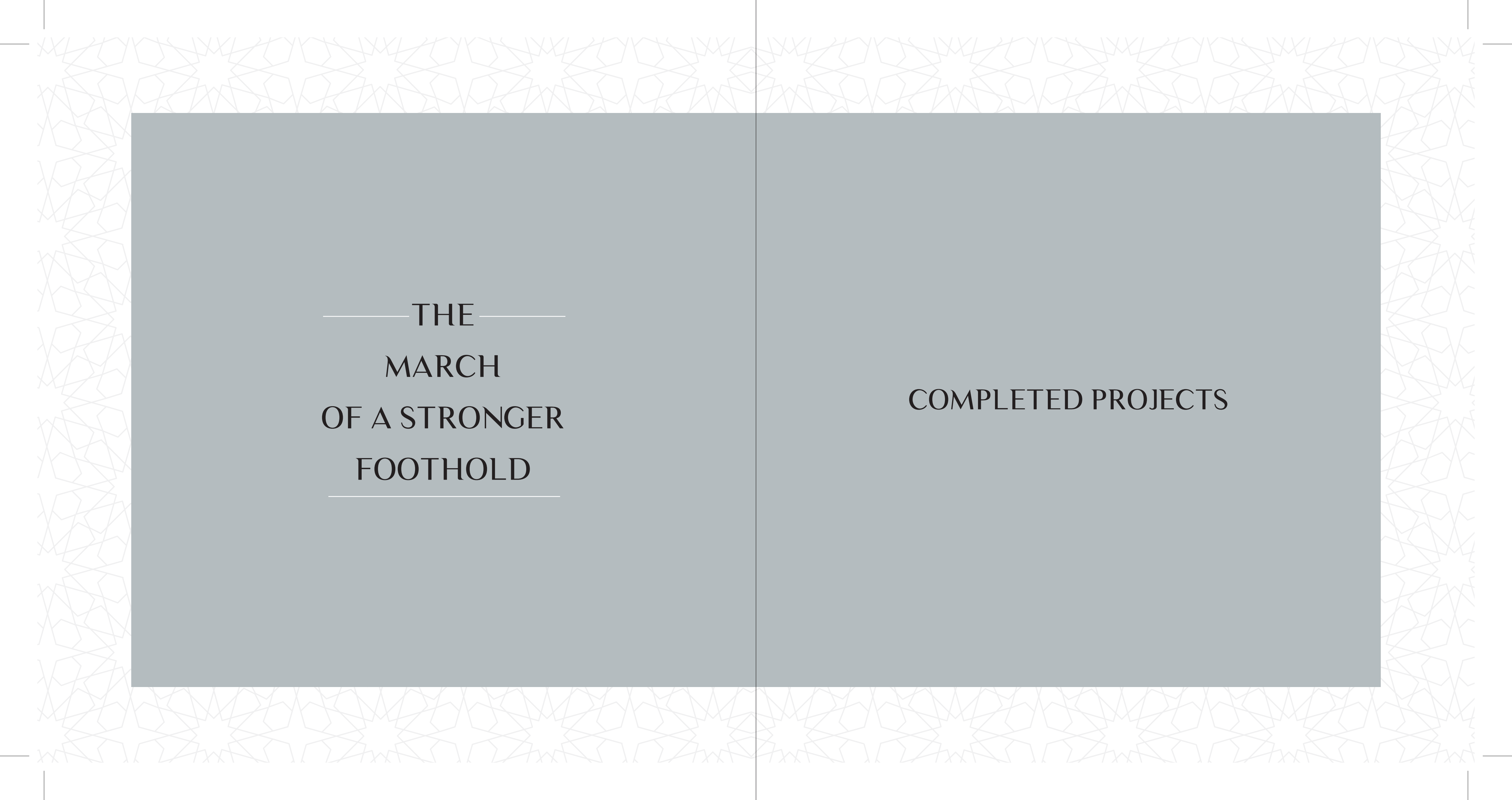
**SHANTA DURGA**  
Dadar (E)



**SAI ICONIC**  
Andheri (W)



**YASHASWATI CHS LTD**  
Ghatkopar (E)



— THE —  
MARCH  
OF A STRONGER  
FOOTHOLD

COMPLETED PROJECTS

30,00,000 SQ.FT.

DELIVERED



ANAND VILLA  
Parel



GORAI SEAWOODS  
Mumbai



JEEVAN SANGAM  
Andheri (W)



KIOLOL KUNJ  
Matunga (E)



MAHLARI SADAN  
Vileparle (E)



PRAKASH TOWER  
Dadar



**NEW VRIDHAVAN CHS LTD**  
Vileparle (W)



**SASHI RESIDENTIAL**  
Vileparle (E)



**SAVGAN HEIGHTS**  
Andheri (W)



**PUSHPA KUNJ**  
Vileparle (E)



**SANIDHYA VIMLA VILLA**  
Juhu

STRATEGIC AND MARKETING PARTNERS:



CONSTRUCTION PARTNERS:

